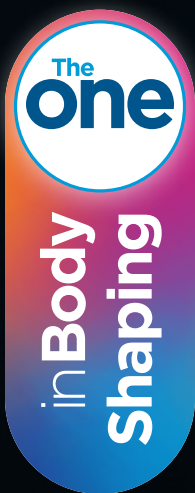


# EMSCULPT<sup>®</sup> neo



LESS

**Fat**

**Muscle**

MORE

# The First of Its Kind

EMSCULPT NEO is considered a breakthrough in non-invasive body shaping. This revolutionary procedure simultaneously delivers heat and magnetic energy resulting in **more fat reduction** and **more muscle growth** compared to any single gold standard product.



**RF & HIFEM+**  
for Fat & Muscle



**+25%**  
Muscle  
on average\*



**-30%**  
Fat  
on average\*

**COMBINED 30-MIN.  
TREATMENT**

The data shown represent the average results of 3 EMSCULPT NEO's clinical studies\*. Results and patient experience may vary.

— MORE for LESS —



BEFORE



AFTER **EMSCULPTI**



1 MONTH AFTER THE LAST TREATMENT, COURTESY OF: BTL AESTHETICS

BEFORE



AFTER **EMSCULPTI**



3 MONTHS AFTER THE LAST TREATMENT, COURTESY OF: BRUCE E. KATZ, M.D.

BEFORE



AFTER **EMSCULPTI**



IMMEDIATELY AFTER THE LAST TREATMENT, COURTESY OF: MELANIE PALM, M.D.

BEFORE



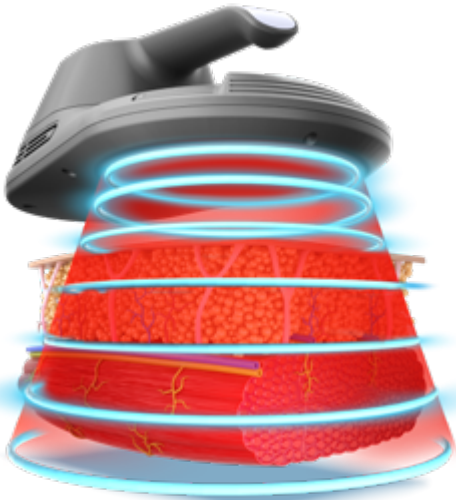
AFTER **EMSCULPTI**



1 MONTH AFTER THE LAST TREATMENT, COURTESY OF: DIANE DUNCAN, M.D.

# How It Works

**EMSCULPT NEO** is the world's first and only technology that uses **Radiofrequency and HIFEM+** (high intensity focused electromagnetic field) to **eliminate fat and build muscles non-invasively.**



**RF**

**HIFEM+**

Results and patient experience may vary.

## Fat Breakdown

In less than 4 minutes the **temperature in fat reaches** levels that cause their **permanent damage.**

## Muscle Warm-Up

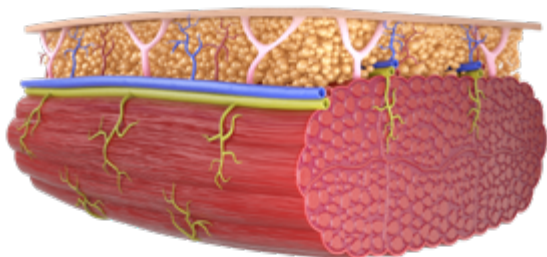
The muscle **temperature raises** by several degrees, **similar to what a warm-up activity does before any workout.**

**30**  
minutes



**LESS** **-30%**  
**Fat**

on average\*



**+25%** **MORE**  
**Muscle**

on average\*

The data shown represent the average results of 3 EMSculpt Neo's clinical studies.\*

## **Supramaximal Contraction**

**Muscles** in the treated area **are contracted at intensities** that are **not achievable during routine exercise.**

## **After Treatment**

**The fat cells are slowly removed** from the body and the strained **muscle fibers initiate a growth process.** This results in **fat elimination and muscle building.**

# More Applicators & Body Parts

Emsculpt NEO individually tailored treatments can help you **eliminate fat and build muscles on various body parts.**



No Downtime  
No Anesthesia



Two Therapies in  
a Single Treatment



**Walk-in  
Walk-out**



**Abdomen**

**Buttocks**

**Inner Thighs**

**Outer Thighs**

**Front Thighs**

**Back Thighs**

**Biceps**

**Triceps**

**Calves**



**PATIENTS UP TO BMI 35**

# More Lift Less Time

EMSCULPT  
neo®



BEFORE



1 MONTH AFTER THE LAST TREATMENT, COURTESY OF: BRUCE E. KATZ, M.D.

AFTER EMSCULPT®



BEFORE



6 MONTHS AFTER THE LAST TREATMENT, COURTESY OF: JULIEN SAMUELS, M.D.

AFTER EMSCULPT®



BEFORE



1 MONTH AFTER THE LAST TREATMENT, COURTESY OF: Yael HALAAS, M.D.

AFTER EMSCULPT®



BEFORE



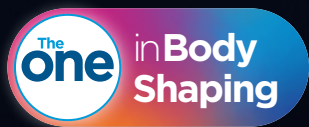
1 MONTH AFTER THE LAST TREATMENT, COURTESY OF: DIANE DUNCAN, M.D.

AFTER EMSCULPT®





# More Definition Less Commitment



BEFORE



AFTER **EMSCULPTi**



IMMEDIATELY AFTER THE LAST TREATMENT, COURTESY OF: KLAUS HOFFMANN, M.D.

BEFORE



AFTER **EMSCULPTi**



1 MONTH AFTER THE LAST TREATMENT, COURTESY OF: BTL AESTHETICS

BEFORE



AFTER **EMSCULPT**



3 MONTHS AFTER THE LAST TREATMENT, COURTESY OF: BTL AESTHETICS

BEFORE



AFTER **EMSCULPT**



4 WEEKS AFTER THE LAST TREATMENT, COURTESY OF: RAMINDER SALUJA, M.D.

# Backed by Science

# 7<sup>\*</sup>

## New Clinical Studies

---

EMSCULPT NEO showed consistency in eliminating fat and/or building muscle in all latest clinical studies.

# 30<sup>\*</sup>

## Scientific Publications

---

More than 30 scientific publications since 2018 make HIFEM the most intensively researched technology used in non-invasive body shaping.

EMSCULPT  
**neo**<sup>®</sup>

# Frequently Asked Questions

## **Why is Emsculpt NEO the ONE in body shaping?**

EMSCULPT NEO is the first procedure to provide simultaneous fat elimination and muscle building in a combined 30-minute session.

## **Am I a candidate?**

Everybody can benefit from more muscles and less fat. Ask your provider if the treatment is suitable for you.

## **What is the treatment time?**

Four 30-minute treatments scheduled once a week are recommended. Your provider will help you create a treatment plan tailored to your specific goals.

## **Is there any downtime?**

### **Any pre/post-treatment preparation?**

EMSCULPT NEO is a non-invasive procedure that requires no recovery time or any pre-treatment preparation.

## **What does it feel like?**

EMSCULPT NEO procedure feels like an intense workout with a warming sensation in the treated area. You can lay down and relax during the treatment.

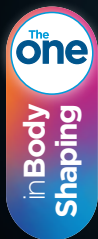
## **Does it really work?**

YES! EMSCULPT NEO showed consistency in eliminating fat and/or building muscle in seven latest clinical studies. Moreover, 30 scientific publications make HIFEM the most intensively researched body contouring technology since its introduction in 2018.

## **How fast will I see results?**

You begin to feel tangible results right after the treatments. Positive results are usually reported two to four weeks after the last session and continue to improve for several weeks following treatment.

# EMSCULPT neo®



**Ask Your  
Provider  
Today!**



**EMSCULPTNEO.COM**  
**#EMSCULPT**



Please be aware that some of the information / intended uses / configurations / accessories mentioned here are not available in your country. For more information contact your local distributor. Results and patient experience may vary. As with any medical procedure, ask your doctor if the EMSCULPT NEO® procedure is right for you. In the EU, EMSCULPT NEO® is intended for the treatment of obesity by fat reduction through neuromuscular stimulation, radiofrequency-induced lipolysis and increase of blood flow. ©2021 BTL Group of Companies. All rights reserved. BTL®, EMSCULPT NEO® and EMSCULPT® are registered trademarks in the United States of America, the European Union, or other countries. The products, the methods of manufacture or the use may be subject to one or more U.S. or foreign patents or pending applications. Trademarks EMSCULPT®, EMSCULPT NEO®, EMSELLA®, EMTONE®, EMBODY®, and HIFEM® are parts of EM™ Family of products. \*Data on file.

899-75EMCNFAAEN102; Emsculpt\_Neo\_BR\_FAA\_EN102